

ASSOCIATION FOR SURGICAL EDUCATION

ANNUAL REPORT 2025



TABLE OF CONTENTS

Objectives by the Secretary	3
Message from the ASE President	4
ASE Board of Directors	7
Committee Reports	13
Task Force Reports	19
ASE Programs	20
Message from the ASE Foundation President	21
Global Surgical Education-Journal of the ASE	22
Annual Meeting	23
ATLAS	25
Past President Spotlight	26
ASE Collaborations	31



OBJECTIVES BY THE SECRETARY

The Association for Surgical Education has a wonderful mission in education. In broad terms, our appreciation of education is captured best in the words of Nelson Mandela – “education is the most powerful weapon which you can use to change the world.” More specifically and with that in mind, our mission as ASE is to lead innovation, scholarship, and professional development in surgical education.

It is with great enthusiasm that we present the 2025 Annual Report of the ASE. After several years of pause, the Annual Report is returning to ensure we have a historical record of our organization, one that is home for all in the surgical education community, appreciating the diversity of those who educate. From an organization that started many years ago with a meeting at Dallas airport, we now have quite a significant body of work and programs, and we hope this Annual Report will provide a comprehensive record of the organization for this past year. This report will emphasize our strategic plan to empower surgical educators, cover recent highlights regarding alignment and innovation, and introduce the leadership team and the incredible Committee and Task Force Chairs and Vice-Chairs, with each Committee/Task Force covering their key projects and highlights. Please take a close look at the fellowships and programs offered by ASE, which includes the longstanding Surgical Education Research Fellowship (SERF), the Surgical Education and Leadership Fellowship (SELF) and the new Ethics of Surgery Fellowship (EthoS), in addition to the Advanced Training in Laparoscopic Suturing (ATLAS) program which launched in 2022. Our Annual Meeting in Seattle promises to be both enriching and inspiring with the theme of “Transforming Surgical Education through Empowerment, Acknowledgement and Inclusion”. Annual Meeting highlights are also covered in the following pages. And with a nod to this Annual Report being a historical document, several Past Presidents of ASE share with us what their presidency meant to them and their biggest accomplishments.

As you will see throughout this report, ASE is a large, diverse and committed community which comes together to continue our journey towards excellence in surgical education. And as we move forward, we are committed to these renewed efforts to deliver annual reports that reflect both our past and present, helping guide us as we shape the next generation of surgeons. If education is a weapon to change the world, ASE will ensure that we will do our part in surgical education.



Tracey Dechert, MD
ASE Secretary

MESSAGE FROM THE ASE PRESIDENT

To All Members of ASE,

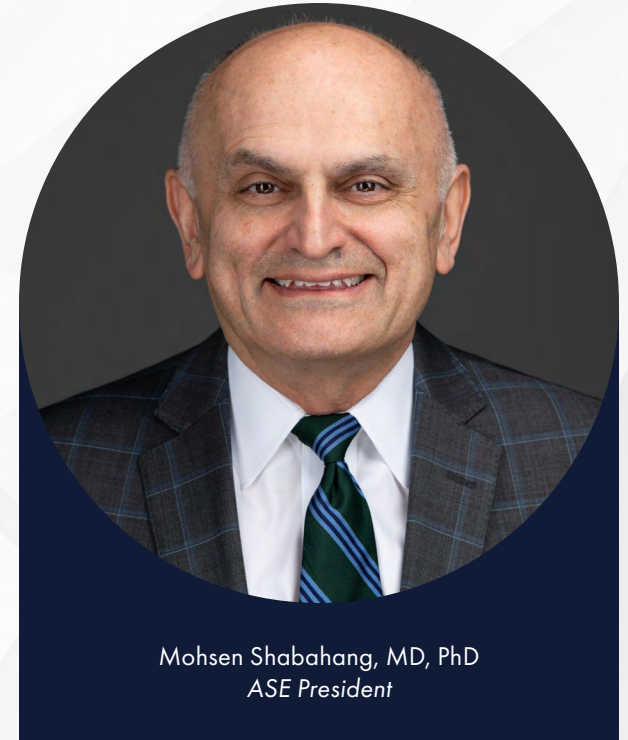
We are thrilled to be resurrecting the Annual Report. This is not only an informative document, but it is also a historical record of where the organization was in 2025. Please take the time to review the 2025 ASE Annual Report.

First, I want to thank you all for the privilege of the Presidency of this great organization. Education is a selfless business, and the Association for Surgical Education has been the home to many surgical educators. Hence, to have had the honor to lead this organization that I have cherished for close to 20 years, is something I will always remember. This year, the theme was **Empowerment, Inclusion, and Acknowledgment**. The focus was on the humanistic aspects of surgical education including the surgical educator and the learner.

As we began this year, our main goals were three-fold. One was to increase the **engagement** of the membership and leadership of the ASE. The other was to create an **alignment** between the common purpose of the organization (empowering surgical educators), the strategic plan (based on membership, infrastructure, finance, leadership, and innovation), identification of various groups of surgical educators, the definition of empowerment, and the infrastructure needed to accomplish these goals. The final task for the year was to continue enhancing **innovation** through stabilizing ASE educational output and creating new products.

ENGAGEMENT: In order to increase engagement, we implemented several measures. These included:

- Increased time for deliberation at the Executive Committee meetings
- Shorter Board meetings with more time for discussion
- Monthly Presidential message to keep membership informed about proceedings
- Monthly Town Hall meetings
- Creation of the Past Presidents Council that deliberated quarterly



Mohsen Shabahang, MD, PhD
ASE President



ALIGNMENT: Alignment was the theme of the Executive Committee retreat in July 2024 in York, PA. As a result of that discussion and many further deliberations, we created the ASE diagram describing all the different components

The idea behind this diagram was the premise that if the common purpose of the ASE is to empower surgical educators, let's define the "who" (who are the educators), "what" (six components of empowerment), and "how" of empowerment.

The diagram is on the website and ready to be downloaded for your reference.

Some of the highlights in the way of alignment were the following:

- Organization of committees into three categories:
 - Infrastructure: these serve the functions of the ASE and include Awards, Membership, Finance, Communication, and Program.
 - Communities: these serve the membership of the ASE in having a place of belonging and they include Clerkship Directors, Clerkship Coordinators, Vice Chairs of Education, and Trainees in addition to the International and CoSEF Task Forces.
 - Innovation: these serve the main educational function of the ASE and include Simulation, Assessment, Faculty Development, Surgical Education Research, Citizenship and Global Responsibility, Diversity, Equity, and Inclusion, and Graduate Surgical Education in addition to the AI & Publications Task Forces.
- Alignment with the ASE Foundation (ASEF) to make that the philanthropic arm of the ASE: Even though there has always been a supportive relationship between the two organizations, this year we strengthened that alliance with the following moves:
 - ASE will support the ASEF for three years with an option to renew and the mission of the ASEF has grown beyond the CESERT grants into sponsorship of programs like Shark Tank, travel for educational scholars, clerkship coordinators, and members of lower/middle income countries. The DaRosa fund has been clearly established and the Numann fund for LMIC travel is being set up.
- Financial alignment:
 - Reinvestment of revenue into innovative programs
 - Strengthening the business development plan for new proposals with full involvement of the Executive Committee and the Board in decision making

- Journal:
 - *Global Surgical Education-Journal of the ASE (GSE-JASE)* has continued to be successful generating revenue
 - A Publications Task Force was established as a group open to all of our members especially the trainees. This group will work in concert with the Editorial Board to expedite review of manuscripts
- Management:
 - BSC Management continues to be a robust partner, and plans were made for supporting all the innovative programs of the ASE as we move into the future
- Independent Academic Medical Center Working group: In alignment with the theme of inclusion, we set up a working group in the Membership Committee to accommodate the needs of IAMC members.

INNOVATION: The ASE committees and leadership continues to propose innovative educational programs, and the following are some of the developments in the past year.

- Creation of the honor of Fellow of the ASE (FASE). The first class will be inaugurated in May 2025
- Creation of Registry for Letters of Recommendation allowing for the ASE to serve its membership by creating connections with more senior members to act as letter writers for promotions and memberships in surgical societies.
- ATLAS (Simulation Committee) entered a new phase by securing a \$60,000 grant to fund pilots in collaboration with the American College of Surgeons and the Fellowship Council.
- The Learning Management System (LMS) was expanded to more programs.
- EthoS (Citizenship and Global Responsibility Committee) pilot was approved and will begin in Spring 2025 as a course on ethics for surgical educators.

- Established programs such as SERF and SELF further evolved by establishing a transparent pathway for leadership transition.
- ASE Mid-Career Development course was designed and approved for a pilot to begin Spring 2026.

In conclusion, the past year has been a busy and productive year for the Association for Surgical Education. We kept our theme of Empowerment, Inclusion, and Acknowledgment in mind and attempted to increase Engagement, Alignment, and Innovation.

Thank you again for the honor of the Presidency.

Humbly submitted,

Mo Shabahang, MD, PhD, MAMSE



ASE BOARD OF DIRECTORS



PRESIDENT

Mohsen Shabahang, MD,
PhD



PRESIDENT-ELECT

Aimee Gardner, PhD



VICE-PRESIDENT

Marc de Moya, MD



SECRETARY

Tracey Dechert, MD



TREASURER

Alan Harzman, MD



IMMEDIATE PAST PRESIDENT

Michael Awad, MD, PhD,
MHPE



EDITOR-IN-CHIEF, GLOBAL SURGICAL EDUCATION- JOURNAL OF THE ASE, AND PAST PRESIDENT

Dimitrios Stefanidis, MD,
PhD



PAST PRESIDENT

Adnan Alseidi, MD, EdM



ASE FOUNDATION PRESIDENT

Amalia Cochran, MD



DIRECTOR AND SENIOR VICE PRESIDENT OF THE ACS DIVISION OF EDUCATION

Ajit Sachdeva, MD

ASE COMMITTEE CHAIRS



**CHAIR, ASSESSMENT,
CURRICULUM, AND
EVALUATION**

Emily Huang, MD, MAEd



**VICE CHAIR,
ASSESSMENT,
CURRICULUM, AND
EVALUATION**

Tasha Posid, MA, PhD



CHAIR, AWARDS

Cate Unruh, MEd



VICE CHAIR, AWARDS

Phoenix (Xiaodong) Chen,
PhD, MSc, Beng



**CHAIR, CITIZENSHIP
AND GLOBAL
RESPONSIBILITY**

Sabrina Sanchez, MD,
MPH



**VICE CHAIR,
CITIZENSHIP
AND GLOBAL
RESPONSIBILITY**

Olabisi Sheppard, MD



**CHAIR, CLERKSHIP
DIRECTORS**

Matthew Lin, MD



**VICE CHAIR,
CLERKSHIP DIRECTORS**

Justin Wagner, MD



**CHAIR,
COMMUNICATIONS**

Ming-Li Wang, MD



**VICE CHAIR,
COMMUNICATIONS**

John Falcone, MD, MS



**CHAIR,
COORDINATORS
OF SURGICAL
EDUCATION**

Rolanda Whitford, APACS



**VICE CHAIR,
COORDINATORS
OF SURGICAL
EDUCATION**

Caroline Rhodes, APACS



CHAIR, DEVELOPMENT

Dmitry Nepomnayshy,
MD



**VICE CHAIR,
DEVELOPMENT**

Nell Maloney Patel, MD



CHAIR, DEI

Amanda Cooper, MD



VICE CHAIR, DEI

Sheina Theodore, MD



**CHAIR, FACULTY
DEVELOPMENT**

Kenneth Lipshy, MD



**VICE CHAIR, FACULTY
DEVELOPMENT**

Jacob Peschman, MD



CHAIR, FINANCE

Alan Harzman, MD



VICE CHAIR, FINANCE

Tracey Dechert, MD



**CHAIR, GRADUATE
SURGICAL
EDUCATION**

Kimberly Hendershot, MD



**VICE CHAIR,
GRADUATE SURGICAL
EDUCATION**

Kshama Jaiswal, MD



CHAIR, MEMBERSHIP

Prasad Poola, MD



**VICE CHAIR,
MEMBERSHIP**

Sarah Jung, PhD



CHAIR, PROGRAM

Nabil Issa, MD



**VICE CHAIR,
PROGRAM**

Brigitte Smith, MD, MHPE



CHAIR, SIMULATION

Joon Shim, MD, MPH



**VICE CHAIR,
SIMULATION**

Matthew Ritter, MD



**CHAIR, SURGICAL
EDUCATION
RESEARCH**

Priti Parikh, PhD



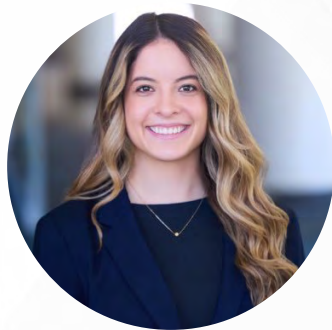
**VICE CHAIR,
SURGICAL
EDUCATION
RESEARCH**

Hee Soo Jung, MD



**RESIDENT CHAIR,
TRAINEE**

Sophia Williams-Perez,
MD



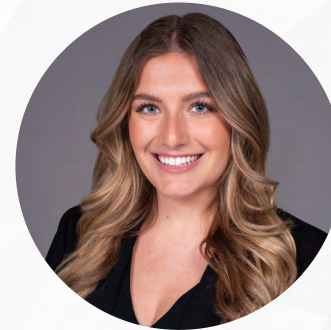
**MEDICAL STUDENT
CHAIR, TRAINEE**

Alexandria L. Soto



**RESIDENT VICE CHAIR,
TRAINEE**

Steven Thornton, MD



**MEDICAL STUDENT
VICE CHAIR, TRAINEE**

Mikayla Deckard



CHAIR, VCE

Brigitte Smith, MD, MHPE



VICE CHAIR, VCE

Rebecca Hoffman, MD

ASE PROGRAM DIRECTORS AND LIAISONS



DIRECTOR, SERF

Gurjit Sandhu, PhD



CO-DIRECTOR, SERF

David Rogers, MD



DIRECTOR, SELF

Laura Torbeck, PhD, MS



**LIAISON – ACS
BOARD OF
GOVERNORS**

Christopher Brandt, MD



**LIAISON – ACS/
APDS/ASE PREP
CURRICULUM**

Kristine Calhoun, MD



**LIAISON – ACS/ ASE
MEDICAL STUDENT
CORE CURRICULUM**

Ranjan Sudan, MD



**LIAISON – ALLIANCE
FOR CLINICAL
EDUCATION**

Rachel Slotcavage, MD



LIAISON – APDS

Tania Arora, MD



LIAISON – WISE-MD

Mary Ann Hopkins, MD



**CoSEF
REPRESENTATIVE**

Caitlin Silvestri, MD

COMMITTEE REPORTS

ASSESSMENT CURRICULUM AND EVALUATION

Emily Huang, MD, Chair | Tasha Posid, PhD, Vice Chair

The Assessment, Curriculum and Evaluation Committee's mission is to enhance the capacity of ASE members in four areas: learner assessment, faculty evaluation, program evaluation, and measurement principles as related to surgical education research. In so doing, we hope to enhance best practices in our field for such things as the ACGME milestones reporting, PGY-1 supervision standards, and the ABS performance requirements. We also hope to promote research on assessment and evaluation methods. We hope to provide an annual workshop/course on topics related to these domains. New foci of interest and new sub-committee efforts are encouraged.

Key Projects & Highlights

- Thinking Out of the Box, a featured session at the Annual Meeting, showcasing innovative practices in surgical education.
- EPA Implementation Project, including a panel at SEW 2025, and ongoing research on how EPAs are actually being implemented on-the-ground at institutions across the country after the ABS mandate went into place.

AWARDS

Cate Unruh, MEd., Chair | Phoenix Chen, PhD, Vice-Chair

The ASE Education Awards recognize and celebrate the dedication of outstanding surgical educators. By highlighting excellence and innovation in teaching, these awards support educators in career advancement,

and emphasize the importance of teaching as a vital area of academic expertise for surgical education.

Key Projects & Highlights

- The Awards Committee grants eight annual awards for excellence in teaching, innovation, and research, plus a Visiting Scholar Fellowship travel scholarship to support the ASE mission of global surgical education.
- The committee is reviewing the current number and scope of awards to identify additional opportunities for recognizing our dedicated members and their outstanding contributions.

CITIZENSHIP AND GLOBAL RESPONSIBILITY

Sabrina Sanchez, MD, MPH, Chair | Olabisi Sheppard, MD, Vice-Chair

The Citizenship and Global Responsibility Committee's mission is to promote the value of citizenship and social responsibility globally and locally.

Key Projects & Highlights

- EthoS Fellowship - This year we are piloting a new program, the Ethics of Surgery Fellowship. This is a one year fellowship designed to equip individuals with the skills and knowledge base prerequisite for being surgical ethicists, ethics educators, for participating on hospital ethics committees, and for conducting surgical ethics research.
- FAST Event - As in previous years, the CGR Committee is collaborating with APDS and surgical educators at the annual meeting location to host high school students traditionally under-represented in medicine in

an interactive event to foster their interest in pursuing a future career in healthcare.

CLERKSHIP DIRECTORS

Matthew Lin, MD, Chair | Justin Wagner, MD, Vice Chair

The mission of the Clerkship Directors Committee is foster and promote a community of surgical educators dedicated to undergraduate medical education (UME) through research, innovation, and evidence-based practice. Although the committee is primarily composed of clerkship directors, we welcome anyone with an interest in UME.

Key Projects & Highlights

- White paper on Longitudinal Integrated Curriculum
- Developing a role for the Academy of Clerkship Directors members to help support fellow surgical educators

COMMUNICATIONS

Ming-Li Wang, MD, Chair | John Falcone, MD, Vice Chair

The mission of the Communications Committee is to enhance engagement and collaboration within the ASE membership and the broader surgical education community. We aim to build strong connections and partnerships both within ASE and with other surgical societies. Through scholarship and the dissemination of best practices, we strive to improve the field of surgical education.

Key Projects & Highlights

- Great Debates Series- A collaboration with CoSEF to explore evidence-based arguments on both sides of controversial education topics.
- Newsletter and Podcast- The ASE podcast and newsletter serve as platforms to introduce experts and leaders in surgical education,

while also promoting opportunities for members to connect with these individuals. Through interviews, features, and insights, these communication tools aim to foster engagement, highlight innovation, and strengthen the professional network within ASE.

COORDINATORS OF SURGICAL EDUCATION

Rolanda Whitford, APACS, Chair | Caroline Rhodes, APACS, Vice Chair

The Coordinators of Surgical Education Committee is an organization whose mission is to develop resources to support, educate, and inspire student coordinators in surgery. This Committee addresses the educational needs of medical students in surgery and is focused on developing effective plans and goals to make the clerkship successful. The Committee provides helpful information and guidance to coordinators and enables them to get involved in group discussions on issues surrounding medical student education. The Committee meets during the Annual Meeting and conducts business via e-mail and conference calls throughout the year.

Key Projects & Highlights

- Membership - We are working on building our membership. Our minor goal is to have coordinators from all 50 states and our major goal would be to have someone from every medical school.
- Universal file-sharing system - Another goal is to create a way for us to all be able to share documents through a (preferably free) platform that is "friendly" to all systems. Not every university/hospital will allow Google, Dropbox, Teams, etc.

DEVELOPMENT

Dmitry Nepomnayshy, MD, Chair | Nell Maloney Patel, MD, Vice Chair

The Development Committee of the Association for Surgical Education is committed to advancing surgical education through strategic resource development, stakeholder engagement, and innovative program support. We strive to build sustainable partnerships and secure the financial and operational resources necessary to empower research, education, and best practices for engaging our learners to develop strong surgeons for the next generation.

Key Projects & Highlights

- This year, we are proud to report that we achieved our fundraising goal, reaching a total revenue of \$116,275.00, an increase from last year's \$102,087.50.
- While exhibitor revenue remained relatively flat at \$18,025, the overall growth was largely driven by a significant increase in institutional sponsorship.
- In 2024, we raised \$55,000 from institutions; this year, that number rose to \$77,500. Notably, we secured 17 institutional sponsors, including platinum-level contributions of \$7,500 each from Duke Surgery Duke University School of Medicine, Mass General

Brigham, The Ohio State University College of Medicine - Department of Surgery and Department of Urology, U Health - University of Utah, and University of Wisconsin School of Medicine and Public Health - Department of Surgery.

- Industry sponsorship totaled \$20,750, with \$10,000 of that coming from Johnson & Johnson MedTech.

DIVERSITY, EQUITY, AND INCLUSION

Amanda Cooper, MD, Chair | Sheina Theodore, MD, Vice Chair

The DEI Committee is committed to improving cultural awareness and increasing diversity, equity and inclusion in our organization. As surgeons and educators, we seek to improve the care of our patients as we strive to educate ourselves and champion causes to advance diversity, equity and inclusion in surgery.

Key Projects & Highlights

- Panel on Nurturing Surgical Families to Build a More Inclusive Surgical Workplace at Surgical Education Week
- Underrepresented in Medicine Scholarship-for the second year the committee has helped support the cost of attending the annual meeting for two trainees



FACULTY DEVELOPMENT

Kenneth Lipshy, MD, Chair | Jacob Peschman, MD, Vice Chair

The mission of the Faculty Development Committee is to support the development of effective surgical educators by equipping them with the skills to become strong leaders, mentors, and coaches. In addition, we aim to assist individuals responsible for faculty development by providing practical tools and resources to help surgical faculty grow in key areas identified for improvement. Through this dual focus, we strive to elevate the overall quality and impact of surgical education.

Key Projects & Highlights

- Health Systems Impact on Education / RVU driven faculty payments in Health Systems Survey. Lead Dr. Maloney-Patel and Co-Lead Dr. Ami Shah, 2025 Workshop: "Impact of Modern Healthcare Systems on Surgical Education "Plenary Presentation"
- Registry of External Letter writers to support academic promotion of clinician educators.

FINANCE

Alan Harzman, MD, Chair | Tracey Dechert, MD, Vice-Chair

The Finance Committee's mission is to ensure the financial wellbeing of the ASE through policy, budgeting, investment, and financial oversight.

Key Projects & Highlights

- The Finance Committee and Board of Directors approved a Business Plan Template for committees and other groups to propose new projects costing over \$500 per year. The ASE has money to invest in these programs and encourages applications!
- We have collected and re-approved our policies to make it easier for members and new Treasurers to understand how our finances operate.

GRADUATE SURGICAL EDUCATION

Kimberly Hendershot, MD, Chair | Kshama Jaiswal, MD, Vice Chair

The mission of the Graduate Surgical Education Committee is to promote educational scholarship among graduate surgical educators of all surgical specialties

Key Projects & Highlights

- Imposter Syndrome (ASE-APDS collaborative grant recipient; Digital poster and podium presentations at SEW 25)
- Cognitive Overload
- EPA Implementation (Panel presentation SEW 25)
- Preference Signaling in Surgery (Shark Tank presentation SEW 25)
- Mitigating Bias in Trainee Recruitment (Joint workshop presentation with DEI and Faculty Development SEW 25)

MEMBERSHIP

V. Prasad Poola, MBBS, Chair | Sarah Jung, PhD, Vice Chair

The Committee on Membership works to sustain and grow our organization by identifying what members perceive as valuable to the ASE and collaborating with membership, leadership, and other committees to provide these resources. Further, we look for opportunities to attract new members whether it be students, trainees, surgical educators of all types, program managers and coordinators, scientists, or human performance engineers. We strive to make connections within and outside of the ASE to serve the needs of surgical educators worldwide.

Key Projects & Highlights

- We have started a workgroup focusing on the experiences and needs of surgeon educators at Independent Academic Medical Centers.
- We are having a Membership Committee sponsored workshop at the upcoming ASE meeting called Challenges with Professional Identity

Among Faculty of Independent Academic Medical Centers. We have some great speakers and small group topics and hope to see folks there!

PROGRAM COMMITTEE

Nabil Issa, MBChB, MHPE, Chair | Brigitte Smith, MD, MHPE, Vice Chair

The mission of the Program Committee is to design and create a strong scientifically based program for surgical educators from around the world to exchange ideas and experiences, promote new advances, and collaborate to expand the science of surgical education. The annual program will also be designed to promote comradery and the sense of community of practice among members and participants.

Key Projects & Highlights

- Complete schedules, finalize participants, and define sessions to be included in the program.
- Encourage more attendees from home institutions to register and attend the annual meeting.

SURGICAL EDUCATION RESEARCH

Priti Parikh, PhD, Chair | Hee Soo Jung, MD, Vice Chair

The ASE Research Committee is dedicated to advancing excellence in educational research among ASE members by fostering collaboration, communication, and professional development. Our mission is to support and stimulate all aspects of educational research by coordinating grant reviews, facilitating funding opportunities, and promoting mentorship. We enhance research skills through workshops and educational initiatives, including emerging topics and cutting-edge technologies such as the use of AI for research (being offered at ASE 2025). Additionally, we strengthen the integration of educational research within ASE by building essential

partnerships with other committees, ensuring a dynamic and innovative research community.

Key Projects & Highlights

- Beyond USMLE: Navigating Uncertainty for Residency Application Review in a Pass/Fail Era. This project is a multi-institutional collaborative project among SERC members.
- Decoding the Impact of Preference Signals on Residency Selection. This project is in collaboration with the Graduate Surgical Education Committee and CoSEF.

SIMULATION

Joon Shim, MD, MPH, Chair | Matthew Ritter, MD, Vice Chair

The Simulation Committee of the Association for Surgical Education (ASE) is dedicated to advancing surgical education through simulation-based training. Its mission focuses on promoting the development, adoption, and scientific analysis of simulation methodologies to enhance the skills of surgeons and related healthcare professionals.

In alignment with ASE's broader mission to lead innovation, scholarship and professional development in surgical education, the Simulation Committee plays a pivotal role in integrating simulation into surgical training curricula.

Key Projects & Highlights

- We are on our 5th year of a pre-meeting course. This year's course will be called "Simulation-Based Practices for Teaching Coaching, Mentorship, and Leadership Skills to Surgeon Educators."
- ATLAS program received \$60,000 grant from Medtronic to move forward with a national assessment of laparoscopic suturing skills pilot in 2025.

TRAINEES

Sophia Williams-Perez, MD, Chair-Resident | Steven Thornton, MD, Vice Chair-Resident | Alexandria L. Soto, Chair-Medical Student | Mikayla Deckard, Vice Chair-Medical Student

The Association for Surgical Education (ASE) Trainee Committee is dedicated to fostering a dynamic and inclusive environment for all engaged medical trainees, including medical students, resident physicians, and fellow physicians. We strive to promote recruitment, engagement, and long-term retention within the ASE community. Our mission is to enhance trainee representation, leadership, and advocacy across all ASE committees while supporting collaborative scholarly initiatives that advance surgical education. By identifying the evolving needs and aspirations of trainees, we aim to shape the future of trainee-centric surgical education through inclusion, mentorship, and professional development.

Key Projects & Highlights

- The new Trainee Speed Networking Event at ASE SEW, which will allow trainee attendees to engage with ASE Past-Presidents and surgical education champions. Planned for Wednesday, May 7 from 5-6:30PM PST in Ravenna ABC.
- Return of Near Peer Connection Teams for ASE SEW, which will connect first-time trainee attendees with seasoned trainee attendees to help navigate SEW

VICE CHAIR OF EDUCATION

Brigitte Smith, MD, MHPE, Chair | Rebecca Hoffman, MD, MSCE, Vice Chair

The mission of the VCE Committee is to build a strong and supportive community among current, former, and aspiring Vice Chairs of Education; to define and promote the role of VCEs across various medical education settings; and to elevate the impact of VCEs in both undergraduate and graduate surgical education at the highest levels.

Key Projects & Highlights

- The committee is working to explore and identify common financial models for supporting the education mission of Departments of Surgery.
- The committee has developed and is continuously working to improve an annual pre-meeting course on the role of VCEs. The course is intended for both current and aspiring VCEs.

TASK FORCE REPORTS

AI TASK FORCE

Ganesh Sankaranarayanan, PhD, Co-Chair | Daniel Hashimoto, MD, Co-Chair

The mission of the AI Task Force is to assess the landscape of opportunities in the AI space where ASE can engage in research, education, and leadership on the translation of machine learning to surgical education.

Key Projects & Highlights

- The AI Task Force helped in publishing the *GSE-JASE* AI special issue
- AI Task force is helping with conducting the workshop Leveraging AI for research: Transforming ideas into scholarly publications

COSEF

Caitlin Silvestri, MD, Board Representative

CoSEF is dedicated to cultivating future leaders in surgery education by creating a collaborative environment where members can grow, learn, and contribute to the advancement of the field.

Key Projects & Highlights

- Peer Engagement for Education Research Success (PEERs) Webinar Series - www.surgicaleducation.com/ase-cosef-peers
- Decoding the Impact of Preference Signals on General Surgery Residency Selection: A Mixed Methods Analysis of Program Directors, Applicants, and Medical Student Advisors (in collaboration with SERC and GSE committee, Shark Tank Proposal at SEW 2025)

INTERNATIONAL TASK FORCE

Saseem Poudel, MD, PhD | Anip Joshi, MD

The mission of the International Task Force is to expand the network of surgical education globally, support the work and career development of international surgical educators, and promote global surgical education projects as well as international education research studies.

Key Project & Highlights

- International Faculty Development Project
- General surgical training systems around the world

PUBLICATIONS TASK FORCE

Abbey Fingeret, MD, MHPTT, Chair | Ross Willis, PhD, Vice-Chair

The mission of the Publications Task Force is to provide high-quality and timely reviews for annual meeting manuscripts, while actively developing strategies that promote the society journal *Global Surgical Education*. We aim to generate educational content for the society focusing on best practices in peer review and the creation of visual abstracts. Our efforts are grounded in a commitment to representing the diversity of our organization across demographics, geographic locations, specialties, and educational expertise. Additionally, we monitor meeting abstract submissions to the journal. We strive to recognize and promote dedicated members of our group to positions on the editorial board and in recorder roles.

Key Project & Highlights

- The Publications Task Force is hard at work reviewing journal manuscript submissions from the annual meeting.
- The Publications Task Force is establishing a toolkit of best practices in peer review.

ASE PROGRAMS

The Surgical Education Research Fellowship (SERF) is a flagship ASE program celebrating its 30th anniversary! SERF is a one-year fellowship designed to help investigators develop the skills and knowledge needed for conducting research in surgical education. Each fellow is paired with a SERF Advisor, an experienced researcher, who mentors them throughout their project. The fellowship offers the chance to gain a highly valued skill set, enhancing career opportunities within home institutions and the broader field. Fellows contribute to the growth of surgical education through research, and those with specialized skills become valuable assets to their institutions. Additionally, fellows build a lasting network of colleagues who share similar career goals and interests. 25 SERFers will graduate at the 2025 ASE Annual Meeting and 29 participants will begin their fellowship!

The ASE Surgical Education and Leadership Fellowship (SELF) is a one-year program designed for ASE members seeking to enhance their teaching, education design, and leadership skills in surgical education. Participants are paired with an experienced advisor who meets with them three times throughout the year to provide coaching on a specific area of teaching they wish to improve. Advisors are carefully matched to ensure the best fit for each fellow's interests. The fellowship equips participants with the tools needed to become better teachers and leaders in surgical education while offering ongoing mentorship. Fellows also gain access to a valuable, life-long network of colleagues who share similar career goals and aspirations. 16 SELFers will graduate at the 2025 ASE Annual Meeting and 15 will begin their fellowship!

The Ethics of Surgery Fellowship (EthoS) is a one-year program designed to prepare individuals for roles as surgical ethicists, ethics educators, and participants in hospital ethics committees. The fellowship provides the necessary skills and knowledge for ethics consultations, ethics education, conducting surgical ethics research, and contributing to the development of the field. Fellows gain a valuable skill set that is highly regarded by their institutions, making them pivotal resources in surgical ethics. Additionally, fellows build a life-long collaborative network with colleagues who share their interest in the ethical aspects of surgery. We will be welcoming participants to the pilot year of EthoS in spring 2025.

The ASE is excited to offer the new Ethics of Surgery (EthoS) Fellowship.



MESSAGE FROM THE ASE FOUNDATION PRESIDENT

The ASE Foundation will provide sustainable support for innovation, research, and professional development programs of the Association for Surgical Education and its members.

It is an exciting time to bring a report to you on behalf of the ASE Foundation Leadership. We had a strategic planning session in August of 2024 in which we sought to develop new and wildly expansive goals for the Foundation; the revised mission statement that you see above is a key outcome from the time we spent together. We have strengthened stewardship by creating a fiscal policy task force that has advised on policy and principles, and which has allowed us to formalize how we manage the Foundation's assets. We are also collaborating with SERF leadership on celebrating the 30th anniversary of that flagship ASE program this year. You will see improvements in both giving and recognition of giving based upon suggestions from our donor experience advisory workgroup. This year during the ASE Annual Meeting we are providing our first-ever travel scholarships to support coordinator and LMIC educator travel. Most importantly, we are initiating a new capital campaign named in honor of Dr. Patricia Numann that will create an endowed scholarship to support LMIC surgeon educator development. We have also welcomed Christelle Menetrier as our new Executive Director; I would be remiss to not thank Lois Erlich for her encore performance in support of the Foundation.

Thank you to all who have generously invested in the good works of the ASE Foundation, and I hope that you'll support our vision of working with the ASE to advance careers and scholarship in surgical education.

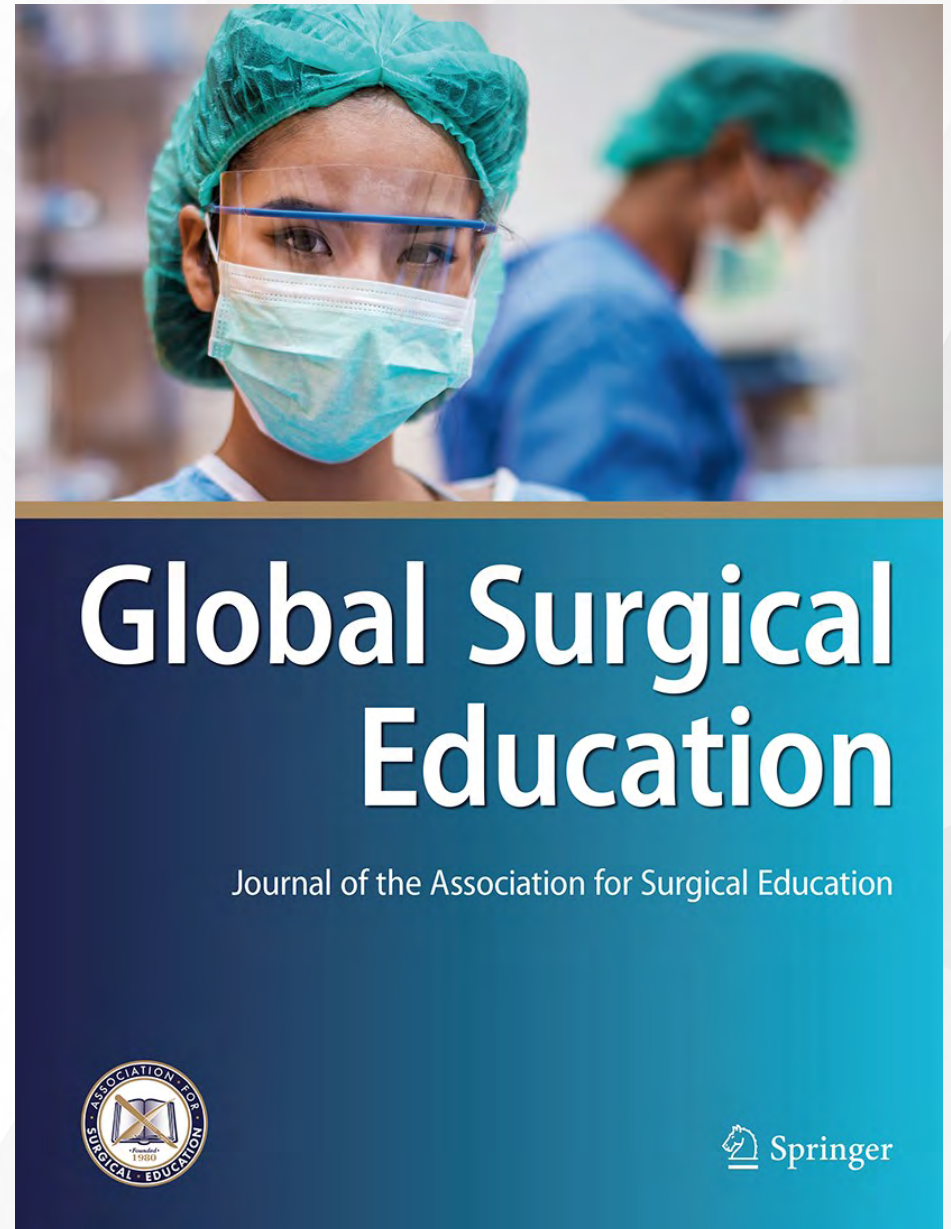
Amalia Cochran, MD, MA
ASE Foundation President 2023-2025



GLOBAL SURGICAL EDUCATION-JOURNAL OF THE ASE (GSE-JASE)

Global Surgical Education- Journal of the Association for Surgical Education (GSE-JASE) was created to address the publication needs of our organization. The journal, which is published by Springer, was founded and started accepting manuscripts in the fall of 2021. Since then, the journal has seen a total of 732 submissions, of which 219 were in the last year. The preponderance of journal submissions come from the ASE Annual Meeting, however, the journal has seen an increasing number of international submissions over time. While the journal is working toward obtaining an impact factor, in 2024, its published articles saw 47,000 downloads, an impressive number that demonstrates the impact the journal already has in the field. Further, in 2024 the ASE received its first royalty payment from the publisher, an important milestone for the organization. The Editor-In-Chief and Associate Editors of GSE-JASE want to express their gratitude to the multiple reviewers who dedicate their time and effort to ensure the quality of the accepted manuscripts in our journal is high.

Dimitrios Stefanidis, MD, PhD
Editor-in-Chief, GSE-JASE



ANNUAL MEETING

The ASE 2025 Annual Meeting is taking place May 6-10 at the Sheraton Grand Seattle in Seattle, Washington. This premier event will bring together leaders in surgical education for dynamic discussions, cutting-edge research, and two distinguished guest lectures. The theme is *Transforming Surgical Education through Empowerment, Acknowledgment, and Inclusion*.

The program promises to be both enriching and inspiring.





MEETING HIGHLIGHTS INCLUDE:

- » 8 Workshops
- » 5 Plenary Presentations
- » 9 Podium Sessions
- » 5 Poster Sessions
- » Signature events such as Candlelight Session, Shark Tank, and Thinking Out of the Box
- » Pre-meeting courses and our Finding Aspiring Surgeons for Tomorrow (FAST) Community Outreach Event high school outreach program
- » Awards Banquet
- » Joint reception with APDS
- » Presidential Address: Mohsen Shabahang, MD, PhD, Empowerment, Acknowledgement, Inclusion in Surgical Education
- » J. Roland Folse Lecture: Patricia Numann, MD, Achieving Equity
- » Royce Laycock Lecture: Amer Kaissi, PhD, Humbitious Leadership in Times of Change: How to Connect with Humility & Elevate with Ambition
- » Recorded Keynote Lecture on Entrustable Professional Activities in Surgery: the Rationale, the Challenges, and the Opportunities by Olle ten Cate, PhD
- » SERF Program and Forum
- » SELF Sessions and Forum
- » Clerkship Coordinators Track
- » Trainee Speed Networking Event
- » Five Panels, including a Joint Panel with APDS on Nuturing Surgical Families, EPAs, Career Transitions, Great Debates, Global Perspectives, Teaching Green
- » Ambassador Program
- » ATLAS Competition

ADVANCED TRAINING IN LAPAROSCOPIC SUTURING (ATLAS)



After nearly a decade of development work done by its Simulation Committee, the Association for Surgical Education (ASE) launched the Advanced Training in Laparoscopic Suturing (ATLAS) Program in 2022. This program was created in response to a national needs assessment of Fellowship Council Program Directors and Fellows that demonstrated a lack of proficiency in laparoscopic skills, specifically for laparoscopic suturing. This program consists of a self-study proficiency-based curriculum for 6 laparoscopic suturing tasks. Validity evidence has been generated to support broad adoption and ATLAS training has been shown to improve laparoscopic suturing performance to a significantly greater extent than other widely used curricula, including FLS.

The ATLAS program and self-study curriculum, including video tutorials and a comprehensive guidebook, are described in detail on a dedicated ATLAS website at atlas.surgicaleducation.com. The ATLAS materials are available for purchase through Limbs and Things™ (ATLAS Trainer Box with Task Kit | Limbs & Things US & Canada [limbsandthings.com]) as a stand-alone trainer box, or as an upgrade kit for a standard FLS trainer box. Performance assessment is based on time and errors and is performed by a trained rater using either an in-person or remote asynchronous video-based scoring protocol.

ATLAS Tasks include:

1. Needle Handling
2. Off-set Camera Forehand Suturing
3. Off-set Camera Backhand Suturing
4. Confined Space Suturing
5. Suturing Under Tension
6. Continuous Suturing



PAST PRESIDENT SPOTLIGHT

BRUCE GEWERTZ, MD

ASE President (1983-1984)

What do you consider your biggest accomplishment during your tenure?

As one of the 5 founders of the ASE, I first served as the Secretary-Treasurer organizing the association's business and demographic activities. The first few years were dedicated to recruitment of members and ensuring that the early national meetings were well supported with actionable educational content.

Among other things, during my Presidential year, I focused on reaching out through our broadening membership to promotion committees of medical schools and building consensus that pedagogical excellence was a worthy academic achievement and should be recognized in the promotion process.

What did serving as ASE President mean to you?

My involvement in beginning the ASE was extremely satisfying to me and remains a career highlight for me. This is especially true when noting the proliferation of clinician educator tracks with modern medical school promotion and tenure processes.

PETER LAWRENCE, MD

ASE President (1984-1985)

What do you consider your biggest accomplishment during your tenure?

During my Presidency, the ASE Curriculum Committee developed a third-year student curriculum that ultimately led to an ASE member-authored textbook—now in its 7th edition.

What did serving as ASE President mean to you?

Serving as President helped me enhance my teaching skills, which I've continued to apply in my roles with students and as a program director.

PATRICIA NUMANN, MD, DSC[HON]

ASE President (1985-1986)

What do you consider your biggest accomplishment during your tenure?

- Continued development of Surgical Education as an Academic career path
- Recruitment of departments and members
- Supporting leadership roles for PhDs

What did serving as ASE President mean to you?

Validated my choice to stop doing basic surgical research in favor of surgical education as my academic track.

DEBRA DAROSA, PHD

ASE President (1990-1991)

What do you consider your biggest accomplishment during your tenure?

I proposed the development of a Foundation to generate monies to support research and development efforts associated with the ASE's goals. Jim Hebert, who became president in 1992, took the proposal forward and the ASE Foundation became a reality. The CESERT grants were one of the first resources for research that became possible through the Foundation.

What did serving as ASE President mean to you?

It was truly an honor to serve as the ASE President. I was the first PhD (non-surgeon) President elected to this role...and I worked hard to earn credibility as a leader in the organization. It opened the door for other PhD educators to become future presidents...and that was incredibly meaningful to me.

CHRIS JAMIESON, MB, BS

ASE President (1996-1997)

What do you consider your biggest accomplishment during your tenure?

The encouragement of good teaching by clinical surgeons. This was done by developing workshops that demonstrated good teaching methods, by demonstrating methods to evaluate good teaching, and by emphasizing the importance of teaching evaluations in the academic promotion process.

What did serving as ASE President mean to you?

I enjoyed the community of surgeons and educators from across the USA and Canada, and other countries. The friendship and collaboration over many years remains a valuable and happy experience in my surgical career.

RICHARD REZNICK, MD, MED, FRCSC

ASE President (1999-2000)

What do you consider your biggest accomplishment during your tenure?

Solidifying the concept that the fate of the ASE as an organization was inextricably linked to the quality of the scholarship we fostered. Scholarship was defined broadly, but measured by conventional research metrics such as peer-reviewed funding obtained, peer-reviewed publications, and graduate students trained.

What did serving as ASE President mean to you?

I was President during the earlier years of the ASE. At that time, it was still not a certainty, that surgical education was going to become a modified academic focus for aspiring academic surgeons. I would say, that, for me, the Presidency was an inflection point, which verified that the path I had chosen, and that many now have also chosen, has, indeed progressed to the status of a legitimate pathway towards academic success. In many ways, we have talked about the fact that surgical education was the "orphan child" of our academic tripartite. I believe we can safely say that that "orphan child" has been adopted.

LEIGH NEUMAYER, MD, MS, MBA

ASE President (2001-2002)

What do you consider your biggest accomplishment during your tenure?

My biggest accomplishment over my tenure in leadership of ASE was to help bring together the ASE and APDS to meet together as Surgical Education Week. The first time we had a joint meeting, I was Program Chair for the ASE. It was important that the two organizations come together and with hard work of many people over several years an outstanding relationship was formed. It was critical that the two organizations work together toward the united goal of providing excellent surgical education across the continuum.

What did serving as ASE President mean to you?

To me, serving as President was a true honor and privilege. To this day, I relish the relationships that I established through the ASE. The opportunities afforded to me as a young surgical educator were so critical to my ultimate success. I appreciate those who served before and after me and the opportunities we have been able to provide for several generations of surgical educators.

DAVID ROGERS, MD, MHPE

ASE President (2009-2010)

What do you consider your biggest accomplishment during your tenure?

1. Launched the Clerkship Directors workshop that has evolved to become the Updates on the Surgery Clerkship workshop. I was motivated to do this to demonstrate to the clerkship directors that they were a valued part of our organization.
2. I accepted the recommendation of the Executive Committee that we develop a 3-year strategic plan. This process was expertly led by Dimitrios Anastakis. This has become important to the organization to help our leadership maintain a focus as our Presidents serve a single-year term.
3. I led the transition from the publication of Focus on Surgical Education, our internal newsletter/journal, to the creation of an annual report that provided a summary of our awardees and accomplishments.

What did serving as ASE President mean to you?

I considered it a great honor and responsibility. It was an honor to be asked to serve as many of my surgical education heroes had served in this role before me. It was a significant responsibility because the people and programs of the ASE had a profound and positive impact on my life and career. I wanted for us to expand and evolve to assure that these programs were available for everyone interested in surgical education.

MARY ANN HOPKINS, MD, MPHIL

ASE President (2013-2014)

What do you consider your biggest accomplishment during your tenure?

I think that I successfully brought the importance of surgical education in a global context into our organization, with an emphasis on low and middle

income countries, and how the use of technology can vastly expand our ability to provide quality surgical education throughout the world.

What did serving as ASE President mean to you?

One of the greatest honors of my life! From the first meeting I attended in Vancouver, I realized that the ASE was my home: the warmth, exclusivity and excitement of this organization is unlike any other I have known. Our open committees are so incredible, that I was a member of at least 4 committees (the most I could attend that first meeting). It has been so amazing to see the development of this organization over the past 25 years - with new projects encouraged, instituted and developed with the support of leadership. I will always be an active member and look forward to seeing what will happen in the next 25 years!

DANIEL JONES, MD, MS

ASE President (2014-2015)

What do you consider your biggest accomplishment during your tenure?

- Joint meeting of ASE and SEA (anesthesia educators) on topic of safer surgery with simulation.
- Founded Development Committee
- Introduced ASE coin
- Started Meeting App
- Initiated new management company
- Started Past President luncheon
- Published ASE Textbook of Simulation
- Most significant was initiated ACS ASE Skills based simulation for medical students year 1-3 as national curriculum

What did serving as ASE President mean to you?

Tapping talents of so many dedicated and passionate surgical educators to advanced ASE and its mission of teaching, learning and education research.

MARY KLINGENSMITH, MD

ASE President (2015-2016)

What do you consider your biggest accomplishment during your tenure?

I was lucky to work with a great team to accomplish the following: 1. Oversaw end of prior management company (via SIU/Kepner) and vetting of incoming management options, 2. Worked with Recorder to vet journal affiliations (renew vs new arrangement) given end of contract term, 3. Achieved 50% or more completion on areas of Strategic Plan workmap for 2015-17 (one year ahead of schedule) with completion in areas of Research (Engagement of non-MD educators/researchers), increase in high quality presentations at meeting and in publication, expansion and enhancement of SERF, catalog and expand ASE-offered curricula, including collaborative projects with ACS and pre-conference courses and established certification program for clerkship directors. We also rolled out career development tracks and courses for individuals interested in careers in academic surgical education.

What did serving as ASE President mean to you?

Serving as ASE President was a huge honor and career highlight. I learned a lot about managing a complex organization with multiple stakeholders, individuals and groups with intersecting interests, all while confronting a resource constrained system (manpower of our management team, but also what we could expect from our volunteers). It was clear that messaging mattered, as did establishing and reinforcing systems for communication across the organization (with Executive Committee members being communication liaisons to key committees). It was impactful to me to lead such a committed and creative group of surgical educators, and has been an experience unlike any other in my career. I remain grateful for the opportunity.

CHRIS BRANDT, MD

ASE President (2016-2017)

What do you consider your biggest accomplishment during your tenure?

Just prior to the start of my term as President, the longtime Executive Director of the ASE announced her retirement after serving in that position for twenty-six years. Moving on to new administrative leadership required significant analysis of options and reflection on the needs of the ASE and what structure would best support the future goals and development of the organization. It also resulted in further discussion regarding our relationships to other partner organizations, such as APDS and the ASE Foundation. I feel that guiding the ASE through this transition was my biggest accomplishment, and I believe that the decisions made at that time have played a role in the continuing advancement and growth of the ASE under the great talents of the subsequent Presidents.

What did serving as ASE President mean to you?

Serving as ASE President was a tremendous honor and a true privilege. I have been an ASE member since 1990 and I have always considered it as my academic home. My involvement with the ASE was a key factor in my academic advancement and in gaining other leadership positions throughout my professional career. The opportunity to serve as President was a way to give back to the organization and to help it continue to achieve its mission and be a vital and important resource for its members.

AMALIA COCHRAN, MD

ASE President (2017-2018)

What do you consider your biggest accomplishment during your tenure?

This was our first strategic planning year after the move to BSC Management as our management company, and everyone worked hard to come up with a future direction that has proven even bigger and more amazing than I think any of us in that room in Austin expected it to be. I truly believe that the planning by that group set us on the pathway to where we are now as a vibrant, growing organization.

What did serving as ASE President mean to you?

I consider my time as ASE President to be one of the most meaningful honors of my career- what a great group of people to be entrusted with the leadership of! My Presidency also happened at a time that my “day job” was in quite a bit of flux, and to be so invested and involved in activities that were personally meaningful to me during a time that was otherwise challenging professionally was truly a gift.

MICHAEL AWAD, MD, PHD, MHPE

ASE President (2023-2024)

What do you consider your biggest accomplishment during your tenure?

My proudest accomplishment during my tenure as ASE President was the successful launch of a new strategic plan that will guide the society’s priorities and growth over the next several years. This plan reflects a collective vision shaped by input from our members and is focused on strengthening ASE’s impact across education, research, faculty development, and advocacy.

In alignment with that vision, we achieved several key milestones. We launched the Association for Surgical Education Curriculum in Education

Innovation and Teaching (ASCENT) program, an ambitious, structured initiative designed to equip surgical educators with the skills and support needed to innovate and lead. We also implemented a Learning Management System (LMS)—a critical step in modernizing how we deliver educational content, enhance member engagement, and expand ASE’s reach and relevance. Additionally, we laid the groundwork for the launch of a surgical ethics fellowship, addressing a growing need for expertise at the intersection of surgery, education, and ethics.

Together, these initiatives represent a commitment to building sustainable infrastructure and bold programming that will support surgical educators for years to come.

What did serving as ASE President mean to you?

Serving as ASE President was the greatest professional honor of my career. The ASE has been my academic and professional home for many years, and to lead an organization so deeply aligned with my values and passions was both humbling and inspiring.

It was a privilege to collaborate with so many dedicated, forward-thinking educators who are committed not only to training outstanding surgeons but to shaping the future of surgical education itself. The role allowed me to give back to a community that has profoundly influenced my own growth, and to help build pathways for others—especially rising educators—who are eager to lead and innovate.

Being President also gave me a broader appreciation for the complexity and strength of the ASE. I saw firsthand how our members, committees, and leadership work tirelessly—often behind the scenes—to create meaningful, lasting impact. It was deeply gratifying to help elevate and support that work, and to play a part in positioning the ASE for continued success.

Most of all, this experience reaffirmed my belief that surgical education is not just a means to an end—it is a profession in its own right, worthy of investment, recognition, and celebration.

ASE COLLABORATIONS

As we began this year, one of the goals was to formalize our collaborations with other organization through a Memorandum of Understanding with a mechanism to reevaluate these relationships on a periodic basis. We set out to make sure each of these collaborations, past and future served the purpose of the organization and were vibrant. The following are a list of collaborations with other organizations and the purpose they served.

» ASSOCIATION OF PROGRAM DIRECTORS IN SURGERY (APDS)

This has been a historic collaboration which serves the surgical education community through the organization of Surgical Education Week. We worked diligently with the leadership of the APDS to maintain the deep connections and have been planning meetings going into 2029. Through a joint panel during the transition of our meetings each year, we have attempted to align our educational mission even further.

» ASSOCIATION OF OUT SURGEONS AND ALLIES (AOSA)

This collaboration was sought out to further align the ASE with some of the organizations that represent historically marginalized groups among surgical educators and learners. As a result of this collaboration, we held a meeting on February 6, 2025 entitled the Surgical Education Inclusion Summit which hosted representatives from multiple organizations including APDS, AWS, SBAS, LSS, SAAS, NASS, AOSA and ASE. The discussion was vibrant and future direction included formation of an alliance to keep issues of equity and inclusion on the forefront of surgical education.

» SOCIETY OF CRITICAL CARE PROGRAM DIRECTORS

The purpose of this collaboration was to create a forum for this group to be able to hold a course for their respective program directors. For the ASE, this was an opportunity to serve as a meeting place for fellowship faculty and program directors.

» COLLABORATION OF SURGICAL EDUCATION FELLOWS (COSEF)

This collaboration has grown over the past two years and been very fruitful. It has been beneficial for the ASE to be a home for this talented group of surgical learners and scholars. CoSEF serves as a Task Force of the ASE. We have had many discussions about deepening the ties between these two organizations.

» COLLEGE OF SURGEONS OF EAST, CENTRAL AND SOUTHERN AFRICA (COSECSA)

We have been in discussions with the leadership of the organization regarding possibilities for our membership to engage in-person or virtually in surgical education in Central and Southern Africa. This collaboration will have to serve the educational needs of the learners and educators in the region. We hope to engage interested membership with the leaders of COSECSA to explore possibilities.

All these collaborations were developed in alignment with our common purpose of empowering ASE surgical educators. They will also be reevaluated through the same lens and with the philosophy that we enhance our organization through collaboration with others.